

MOTOR SPECIFICATIONS:
MOTOR TECH SPECS

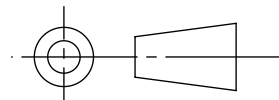
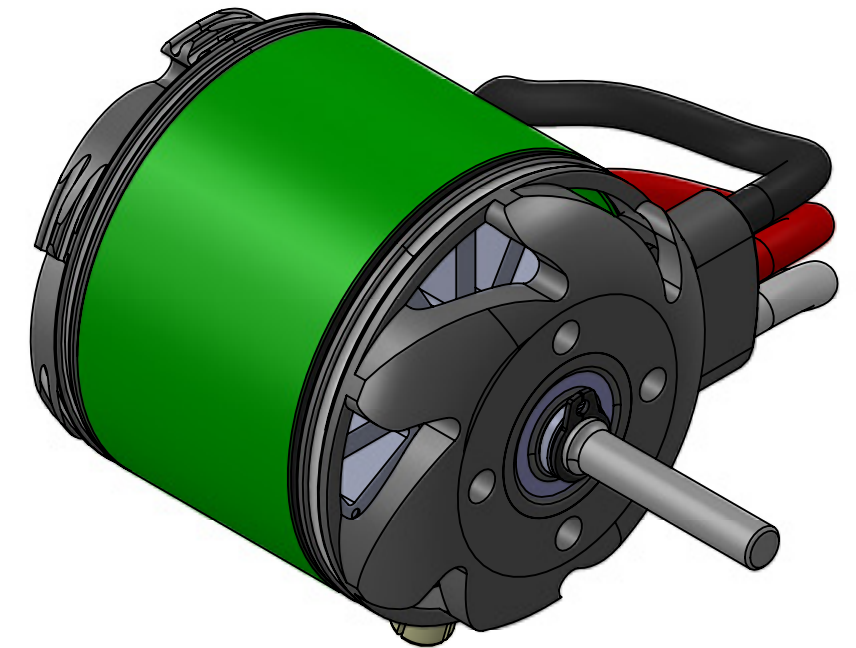
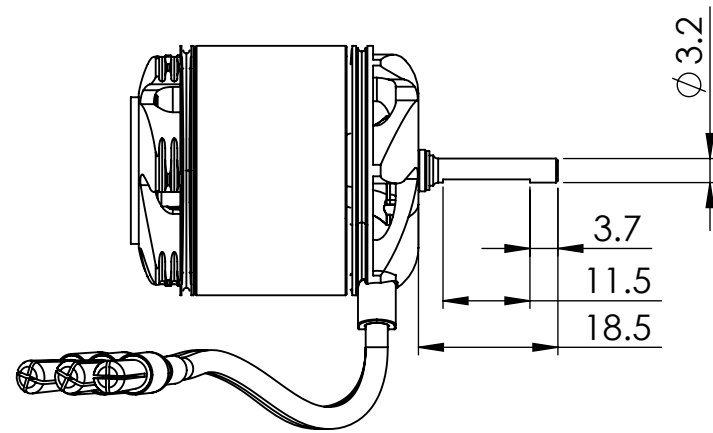
- 8 POLE
- 3,460 KV
- 60,000 RPM MAX

MECHANICAL SPECS

- OAL: 56.5MM
- DIAMETER: 33MM
- SHAFT LENGTH: 18.5MM
- SHAFT DIAMETER: 3.17MM
- MOUNTING OPTIONS
 - M2.5 THREAD ON 16MM BOLT CIRCLE
- WEIGHT: 119 g (4.2 OZ)

WIRE AND BULLETS

- 16 AWG, SILICONE WIRE, BLACK, WHITE, RED, 100MM LONG
- 4.0MM CC BULLETS (FEMALES INCLUDED IN PACKAGING)



PROPRIETARY AND CONFIDENTIAL
THE INFORMATION CONTAINED IN THIS DRAWING IS THE SOLE PROPERTY OF CASTLE CREATIONS. ANY REPRODUCTION IN PART OR AS A WHOLE WITHOUT THE WRITTEN PERMISSION OF CASTLE CREATIONS IS PROHIBITED.

UNLESS OTHERWISE SPECIFIED:
DIMENSIONS ARE IN MILLIMETERS (INCHES)
TOLERANCES:
ANGULAR: MACH ±0.5° BEND ±1°
ONE PLACE DECIMAL ±0.2
TWO PLACE DECIMAL ±0.1

DRAWN: JCV

DATE: 01/22/2013

MATERIAL

FINISH

DO NOT SCALE DRAWING

TITLE:

SIZE | DWG. NO.

B | Vertigo 450-2618 FINAL

SCALE: 1:1

castle creations, inc.